

## **INFRASTRUCTURE FACILITIES**

The Aspee Shakilam Biotechnology Institute (ASBI), Navsari Agricultural University, Surat has been established with the financial aid of Department of Agriculture and Co-operation, Government of Gujarat in April, 2012. The institute provides various facilities including state of art instruments, laboratory facilities, library, e-Lab and women plant tissue culture training centre with qualified academic staff. Also, it is achieving the significant recognition for its high quality of teaching.

### **Vision :**

To promote human resource development in the frontier areas of Molecular Biology, Transgenics, Plant Tissue Culture, Microbiology, Genomics and Proteomics, Immunology, Biochemistry and Bioinformatics; the high priority areas of Agricultural Biotechnology.

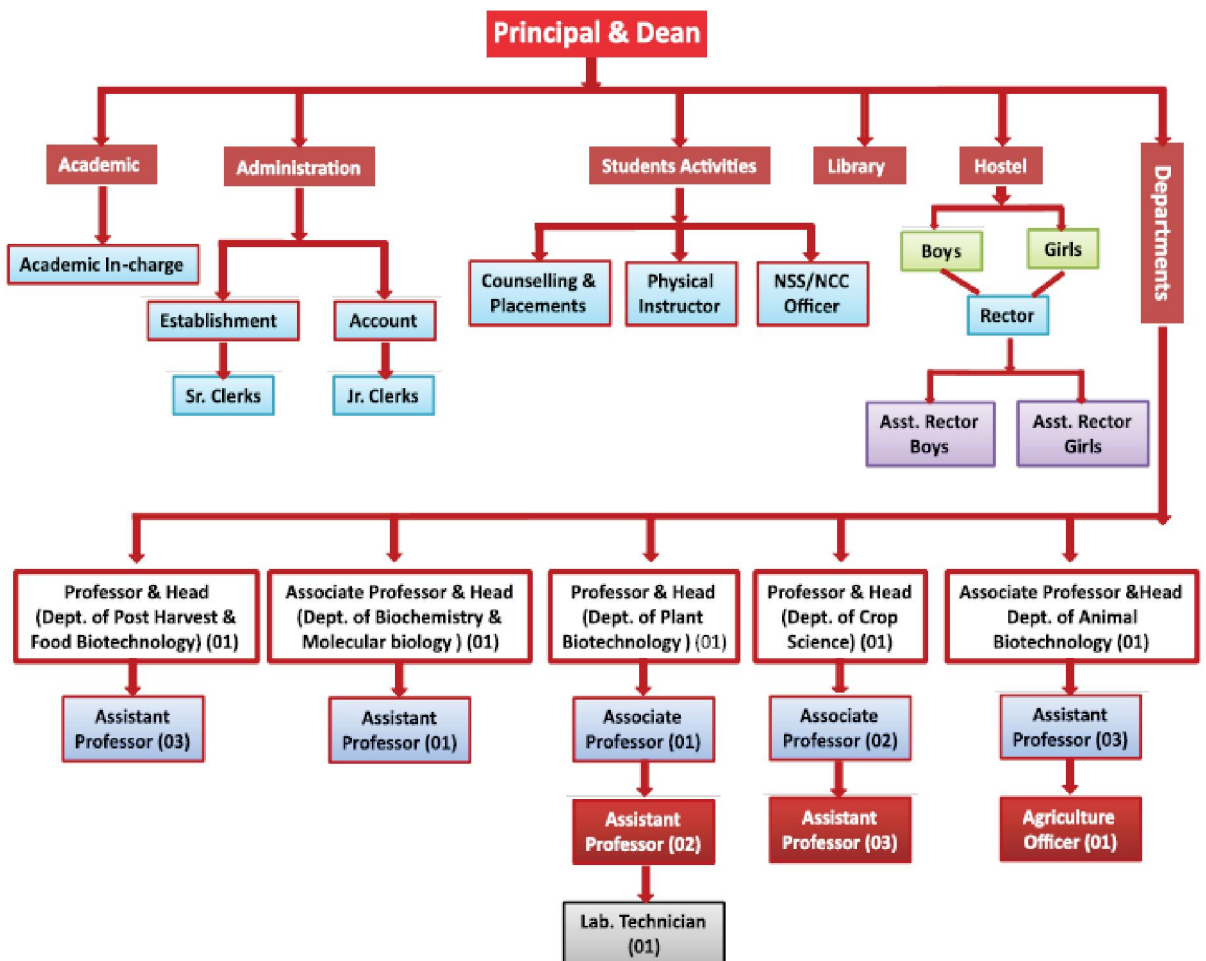
### **Objectives :**

- To promote human resource development through teaching, by conducting training programmes, organizing seminars and interactive meetings, granting scholarships for specific research and conducting examinations leading to the award of degree.
- To cultivate excellence and state of the art laboratories in high priority areas of Agricultural Biotechnology.
- To promote scientific innovations in relation to manufacturing, commerce and industry in general and agriculture in particular.
- To back up advance conventional research programmes in crops for speedy and sustainable output.
- To network with universities, institutions, research organizations, laboratories, industrial or commercial organizations in India or abroad for advancing scientific research.
- To act as consultants / advisors to individuals, institutions, laboratories, (research / industrial / commercial / charitable), and other organizations and also to government bodies, for furtherance of the objectives of the institute.

The Aspee Shakilam Biotechnology Institute has four departments, equipped with high quality instruments, experienced faculties and fully planned academic calendar. All the departments are well established and maintained by experts as well as students. Further more students have been trained for practical handling of the instruments, chemicals and glass wares. The college is engaged with four departments as under departments :

- 1) Division of Plant Biotechnology
- 2) Division of Animal Biotechnology
- 3) Division of Microbial & Environmental Biotechnology
- 4) Bioinformatics Section

### ADMINISTRATIVE STRUCTURE OF THE COLLEGE



## Women Tissue Culture Training Center

- The Aspee Shakilam Biotechnology Institute is conducting the Women Tissue Culture Training Programme since 2014 at Surat for women only.

### Objective:

- Imparting training intended for preparing skilled women in Plant tissue culture technique.

### Detail of Programme:

Staring of the programmes : 2014

Duration of the training : Six months

Admission eligibility : SSC (10<sup>th</sup> standard)

Capacity : 10 women/ batch

No. of Programme : 2 / year

Fees for the training : Rs 100/- (Non refundable)



**Demonstration of plant tissue culture technique**      **Trainees working in the laboratory**

## **INFRASTRUCTURAL FACILITIES:**

### **ACADEMICS**

College provides B. Tech. Biotechnology Degree of 8 semesters. Courses are structured for increased practical and Practice content's. Experiential learning programmes and Courses on entrepreneurship development, communication skills, computer knowledge, agribusiness, and environment science are also included in the courses content's. Class rooms are outfitted with LED interactive board, and the teaching learning is backed by AV teaching aids.

### **ACCOMODATION**

College provides separate hostel facilities for girls and boys. Hostels are equipped with all the basic amenities like, water cooler, TV room, Mess & dining hall.

### **LABORATORIES**

College has separate labs i.e. Molecular Biology, Biochemistry, Microbiology, Bioinformatics and Plant Tissue culture and genetic transformation. All the labs are equipped with state of art instrumentation facilities.

### **INTERNET**

The college has good bioinformatics computer laboratory which provides training to students. The College possesses CCTV surveillance along campus and also managed at hostels both for boys and girls. Colleges having Internet connection, locally networked and connected through wi-fi also to the central server are available for students for their project work and preparing seminar presentations. Internet facilities in the well-equipped internet lab, providing high speed connectivity, the student can surf the internet together unlimited information.

## INSTRUMENTS

1.	UV Transilluminator	30.	Hot air Oven
2.	Vortex	31.	Incubated shaker Max Q 6000
3.	Refrigerated centrifuge with rotor	32.	Incubated shaker Max Q 8000
4.	Mini centrifuge with Rotor	33.	Liquid Nitrogen container (47ltr. + 2ltr.)
5.	Weighing balance	34.	UPLC
6.	UV- Visible Spectrophotometer	35.	Magnetic stirrer with hot plate
7.	pH meter	36.	Hi glass bead stirrer
8.	Autoclave	37.	Digital dry block heater
9.	Thermal cycler	38.	Vertical Electrophoresis
10.	Horizontal Electrophoresis	39.	Muffle Burnace
11.	Real time PCR	40.	Fluorescence spectrophotometer
12.	Gel Doc. System	41.	Highly Pressurized reactor
13.	Laminar Air flow	42.	Vacuum rotator evaporator
14.	Freezer : -40 °C	43.	Glass Distillation unit
15.	Freezer : -20 °C	44.	Mini Centrifuge
16.	Stereo Zoom Microscope	45.	Highly precise weighing balance
17.	Micro-oven	46.	Spectrometer with accessories
18.	Refrigerators	47.	Newton ring apparatus
19.	Atomic Absorption Spectroscopy	48.	Mechanical overheded stirrer
20.	Lyophilizer	49.	Polarimeter
21.	Nano Drop	50.	Sodium Lamp
22.	Freezer (-860C)		
23.	Fermenter		
24.	Hybridization chamber		
25.	Water purification system		
26.	Binocular Microscope		
27.	Trinocular Microscope		
28.	Tissue lyser		
29.	Orbital shaking incubator cum B.O.D. incubator		
30.	Hot air Oven		



## ASPEE SHAKILAM Biotechnology Institute Overview



## College Library



**Tissue culture Lab**



**Plant Biotechnology Laboratory**



**Bioinformatics Laboratory**



**Microbiology Laboratory**





**Classroom**



**Sport Ground**



**Girls Hostel**



**Boys Hostel**



**Girls Gymnasium**



**Boys Gymnasium**



## NSS Activities



## Auditorium