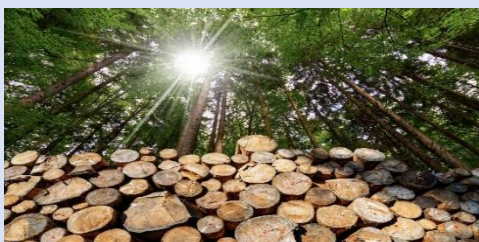




## Annual Research Publications: 2017



**College of Forestry  
(ASPEE College of Horticulture and Forestry)  
Navsari Agricultural University  
Navsari -396 450**



Research Articles		
Sr. No.	Authors and Title	NAAS Rating
1.	<b>Jha, S.K.</b> and Sehgal, R.N. (2017). Genetic divergence for growth, leaf nutrient and biochemical traits in open pollinated families of <i>Dalbergia sissoo</i> . <i>Indian Journal of Ecology</i> ,44(2):340-343.	4.96
2.	Khanduri, A., Biswas, S., Vasistha, H.B., Rathod, D.R. and <b>Jha, S.K.</b> (2017). A status of invasive Alien species plant diversity in Tehri district forest ecosystem of Garhwal Himalayan region. <i>Current World Environment</i> , 12(2):1-12.	4.98
3.	Hake, A.A., Jha, S., <b>Jha, S.K.</b> and Mahatma, M.K. (2017). Estimation of genetic components for metabolites in diverse germplasm of Karanja ( <i>Derris indica</i> L.). <i>Multilogic in Science</i> , 7(24):176-179.	5.20
4.	Dhaka, R.K. and <b>Jha, S.K.</b> (2017). Evaluation of five teak ( <i>Tectona grandis</i> L.F.) provenances for germination test to find out reasons of low germination. <i>International Journal of Pure &amp; Applied Bioscience</i> , 5(5):1420-1426.	4.74
5.	Dhaka, R.K. and <b>Jha, S.K.</b> (2017). Evaluation of provenances for drupe, seed and germination traits in teak ( <i>Tectona grandis</i> L.F.). <i>International Journal of Current Microbiology and Applied Sciences</i> , 6(11):1721-1727	5.38
6.	Kumar, D., <b>Thakur, N.S.</b> and Gunaga, R.P. (2017). Effects of leaf aqueous extract and leaf litter of <i>Melia composite</i> wild on Black Gram ( <i>Vigna mungo</i> (L.) Hepper). <i>Allelopathy Journal</i> , 41(1):127-140.	6.53
7.	Kumar D., <b>Thakur, N.S.</b> and Gunaga, R.P. (2017). Allelopathic influence of leaf aqueous extract and leaf litter of Indian lilac ( <i>Melia azedarach</i> ) on germination, growth, biomass and grain yield of Green Gram ( <i>Vigna radiate</i> ) and Black Chickpea ( <i>Cicer arietinum</i> ). <i>Journal of Current Microbiology and Applied Sciences</i> , 6(10): 2669-2683.	5.38
8.	Kumar, D., <b>Thakur, N.S.</b> , Gunaga, R.P. and Singh, S. (2017). Allelopathic propensity of the aqueous leaf extract and leaf litter of <i>Melia dubia</i> cav. on pulse crops. <i>Journal of Experimental Biology and Agricultural Sciences</i> , 5(5): 644-655.	5.07
9.	Jilariya, D.J., <b>Thakur, N.S.</b> and Gunaga, R.P. (2017). Quantitative and qualitative attributes of <i>Aloe vera</i> linn. grown under <i>Melia composita</i> willd. and sole cropping systems. <i>Indian J. of Ecology</i> , 44(5): 451-455.	4.96
10.	<b>Behera, L.K.</b> , Mehta, A.A., Shrivastava, P.K., Patel, S.M., Prajapati, V.M. and Jadeja, D.B. (2017). Genetic divergence study for growth characters among clones of <i>Eucalyptus</i> . <i>International Journal of Chemical Studies</i> , 5(6): 1780-1782.	5.31
11.	<b>Behera, L.K.</b> , Patel, D.P., Dholariya, C.A., Sinha, S.K., Mehta, A.A., Dobriyal, M.J. and Jadeja, D.B. (2017). Vessel parameters variation among twenty clones of <i>Eucalyptus</i> in South Gujarat. <i>International Journal of Usufructs Management</i> , 18(1): 41-47.	3.23

12.	<b>Behera, L.K.</b> , Maheta, A.A., Dholariya, C.A., Sinha, S.K., Gunaga, R.P. and Patel, S.M. (2017). Bee foraging activity on MPTs by honeybee species during minor honey flow period in south Gujarat condition. <i>International Journal of Usufructs Management</i> , 18(1): 47-53.	3.23
13.	<b>Behera, L.K.</b> , S. K. Jha, Gunaga, R.P., Nayak, D., Tandel, M.B. and Jadeja, D.B. (2017). Genetic variability and correlation study for growth characters among clones of <i>Eucalyptus</i> . <i>International Journal of Chemical Studies</i> , 5(6): 763-765.	5.31
14.	<b>Thakur, N.S.</b> , Gunaga, R.P., Parmar, A.G. and Patel, D.P. (2017). Allelopathic influence of leaf and leaf litter of White Cedar ( <i>Melia azedarach</i> L.) on Eggplant and Okra. <i>Allelopathy Journal</i> , 42(2): 295-305.	6.53
15.	<b>Thakur, N.S.</b> , Dinesh Kumar and Gunaga, R.P. (2017). Transient allelopathic propensity of <i>Melia composita</i> Wild. leaf litter on Chickpea ( <i>Cicer Arietinum</i> L.). <i>Indian Journal of Ecology</i> , 44(5): 443-450.	4.96
16.	Panchal, J.S., <b>Thakur, N.S.</b> , Jha, S.K. and Vikas Kumar. (2017). Productivity and carbon sequestration under prevalent agroforestry systems in Navsari district, Gujarat, India. <i>International Journal of Current Microbiology and Applied Sciences</i> , 6(9): 3405-3422.	5.38
17.	Raju Singh, N., Arunachalam, A., <b>Dobriyal, M.J.</b> , Bhusaram J.B. and Gunaga, R.P. (2017). Crop biomass and yield patterns of dominant agroforestry systems of Navsari district Gujarat, India. <i>Indian Journal of Agroforestry</i> , 19(2):72-78.	4.53
18.	Mohanty, S., <b>Thakur, N.S.</b> , Gunaga, R.P., Dobriyal, M.J. and Desai, B.S. (2017). Value addition in <i>Cymbopogon Spp.</i> to enhance the financial flows from <i>Cymbopogon Spp.</i> - <i>Melia dubia</i> cav. based silvi medicinal and sole cropping systems. <i>Indian Journal of Ecology</i> , 44(6): 812-816.	4.96
19.	Amlani, M.H., <b>Tandel, M.B.</b> , Prajapati., V.M., Pathak., J. G. and L.K. Behera. (2017). Assessment of growth variation among different species of Bamboo. <i>International Journal of Chemical Studies</i> , 5(6): 1436-1439.	5.31
20.	Mali, S.C, Swati Shedage and <b>Shrivastava, P.K.</b> (2017). Economic evaluation of sugarcane based agro forestry systems. <i>Journal of Tree Sciences</i> , 36(1): 34-37.	3.51
21.	Lakkad, A.P., <b>Nayak, D.</b> , Patel, G.R. and Shrivastava, P.K. (2017). Micro-watersheds prioritization for effective soil conservation planning of sub-watershed. <i>Research in Environmental and Life Sciences</i> , 10(3): 275-279.	3.74
22.	<b>Nayak, D.</b> , Patil, N., Behera, L.K. and Litoriya, N. (2017). Antioxidant properties variation in radiation induced genotypes of <i>Jatropha</i> . <i>Journal of Hill Agriculture</i> , 8(4):424-430.	4.94
23.	Lakkad, A.P., <b>Shrivastava, P.K.</b> , Sondarva, K.N. and Varma, M.G. (2017). Estimation of sediment delivery ratio at sub watershed level using Arc SWAT Model, <i>Current Advances in Agricultural Sciences</i> , 9(1): 29-35.	4.69
24.	Nayak, D., Surve, N. and <b>Shrivastava, P.K.</b> (2017). Land use land cover changes using remote sensing and GIS technique: A case study of Navsari district, Gujarat. <i>Journal of Tree Sciences</i> , 36(2):20-27	3.51

25.	Patel, A.I. and <b>Desai, B.S.</b> (2017). Genetic divergence in Ashwagandha [ <i>Withania somnifera</i> (L.) Dunal]: A review. <i>Journal of Medicinal Plants Studies</i> , 5(3): 119-122.	3.53
26.	<b>Sinha, S.K.</b> , Rao, R.V. and Deepak, M.S. (2017). Influence of climate on the total vessel lumen area in annual rings of teak ( <i>Tectona grandis</i> L.f.) from Western Ghats of central Karnataka, India. <i>Tropical Ecology</i> , 58(1):167-175.	7.17
27.	<b>Mehta, A.A.</b> , Tandel, M.B., Patel, D.P., Behera, L.K., Prajapati, D.H. and Jadeja, D.B. (2017). Yield performance of <i>Chlorophytum borivilianum</i> Sant. & Fern and accessions in Moringa based agroforestry system. <i>International Journal of Agricultural Sciences</i> , 9(10):3976-3979.	4.82
28.	<b>Mehta, A.A.</b> , Tandel, M.B., Behera, L.K., Patel, D.P., Dholariya, C.A. and Jadeja, D.B. (2017). Growth performance of <i>Chlorophytum borivilianum</i> Sant. & Fern and accessions in Moringa based agroforestry system. <i>Multilogic in Science</i> , 7(23):60-63.	5.20
29.	Sreekumar, R. and <b>Gunaga, R.P.</b> (2017). Variation in fruit and seed traits among different seed sources of <i>Calophyllum inophyllum</i> L. collected from coastal regions of Konkan India. <i>International Journal of Current Microbiology and Applied Sciences</i> , 6(12): 441-448.	5.38
<b>Book Chapters</b>		
1	Patel, R.M., <b>Shrivastava, P.K.</b> , Nayak, D. and Patel, D.P. (2017). Evaluation of micro watersheds of Navsari, Book on Natural Resource Management for Climate Smart Agriculture (Eds: Sanjay Arora, Sanjay Swami and Suraj Bhan). <i>Soil Conservation Society of India</i> , New Delhi. Pp. 343 – 352.	--
2.	Chaudhari, P.A., Sohagiya, N.J., <b>Sinha, S.K.</b> , Thakur, N.S. and Jha, S.K. (2017). Wood anatomical screening of short rotation trees for pulp and paper making properties: A review (Eds. Parthiban, K.T., Sreenivasan, R.), Plantation and Agroforestry: Pulpwood Value Chain Approach. <i>Scientific Publishers</i> , India. Pp.102-108.	--
3.	<b>Sinha, S.K.</b> , Rao, R.V., Rathore, T.S. and Borgaonkar, H.P. (2017). Growth ring structure and specific gravity variation in juvenile and mature wood of natural growth of teak ( <i>Tectona grandis</i> L.F.). (Eds.), Wood is God: Current trends and future prospects in utilization. <i>Springer Nature Publisher</i> , Singapore. Pp. 105-115.	--
<b>Popular Articles</b>		
1.	Hardik, G., Chavda, J.R., <b>Parekh, V.</b> and Desai, B.S. (2017). <i>Agrobacterium tumefaciens</i> Mechanism of DNA Transfer into Plant Cell. <i>Readers Shelf</i> , 13(12): 6-7.	--
2.	Hardik, G., Chavda, J.R., <b>Parekh, V.</b> and Desai, B.S. (2018) RNai – A Modern Biotechnological Tool Mechanism and Application. <i>Readers Shelf</i> , 14(05): 56-57.	--

\*\*\*\*\*